



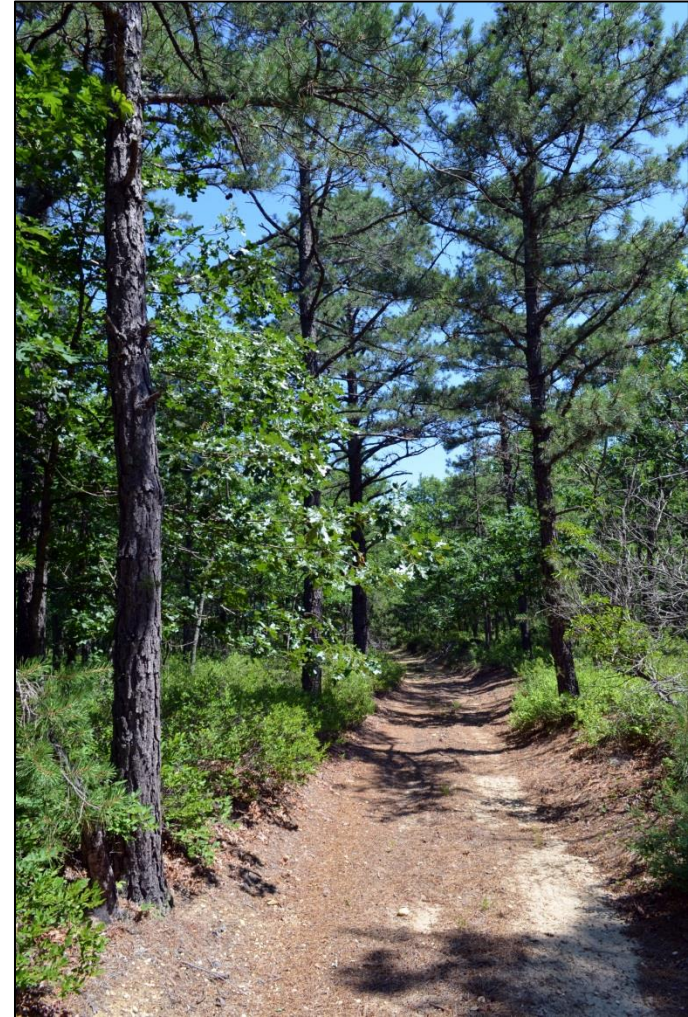
Permanent Land Protection

**Annual Update on
Pinelands Programs
2019**

Newly Protected Land in the Pinelands Area

July 2018-June 2019

	Acres Protected
Pinelands Programs	1,877
State Acquisition (Green Acres)	460
County Farmland Preservation	154
County Open Space	6,656
Municipal Open Space	2
Non-Profit Acquisition	33
Total Acres	9,182



The 44-acre Daniels property in Ocean Township, protected in 2019 through the PCF acquisition program

Photo by NJPC

Acres Protected Through Pinelands Commission Programs July 2018 – June 2019



- PCF Acquisition – 535 acres
- GSP Exit 44 – 129 acres
- Clustering – 234 acres
- Density Transfer – 5 acres
- T&E – 876 acres
- Miscellaneous – 98 acres

Total Acres: 1,877

*The 457-acre Thompson-Wright property in
Southampton and Woodland townships, protected
in 2019 through the PCF acquisition program*

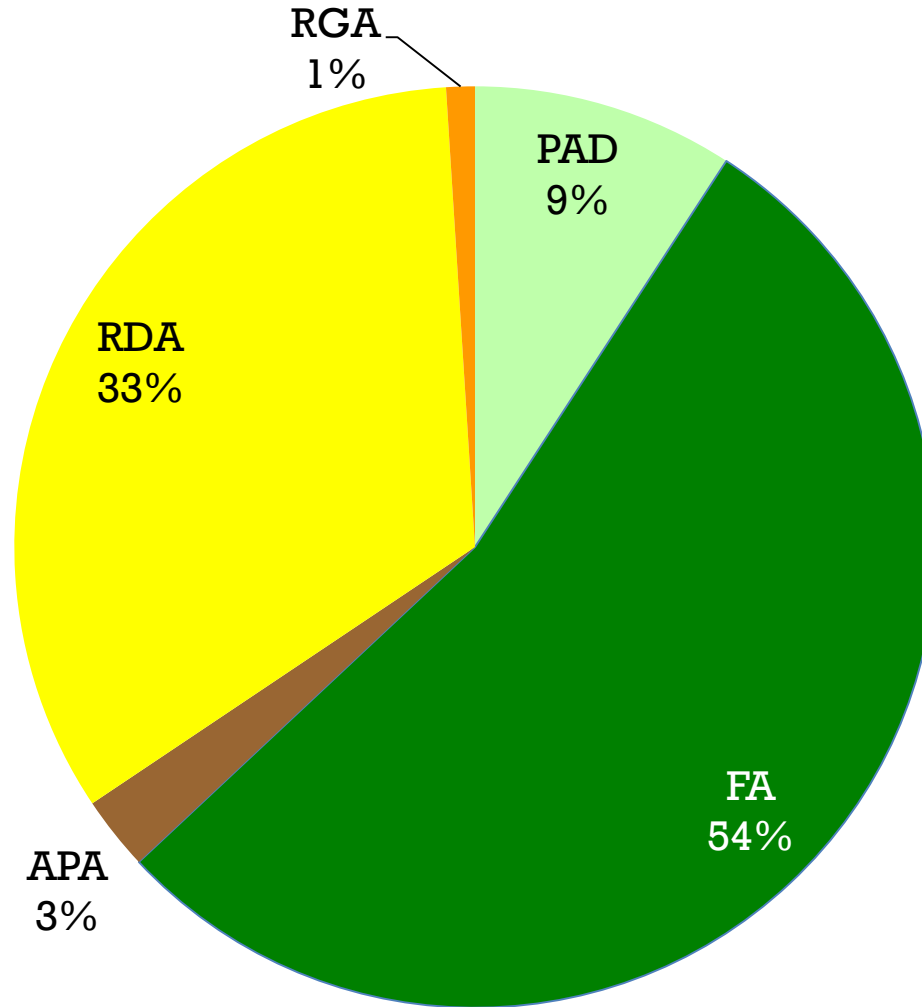
Photo by NJPC

PCF Acquisition Program

Lands Preserved Through FY19

Management Area	Acres Preserved
Preservation Area District	823
Forest Area	4,834
Agricultural Production Area	232
Rural Development Area	2,992
Regional Growth Area	90
Total	8,969

PCF Acquisition Program Lands Preserved Through FY19

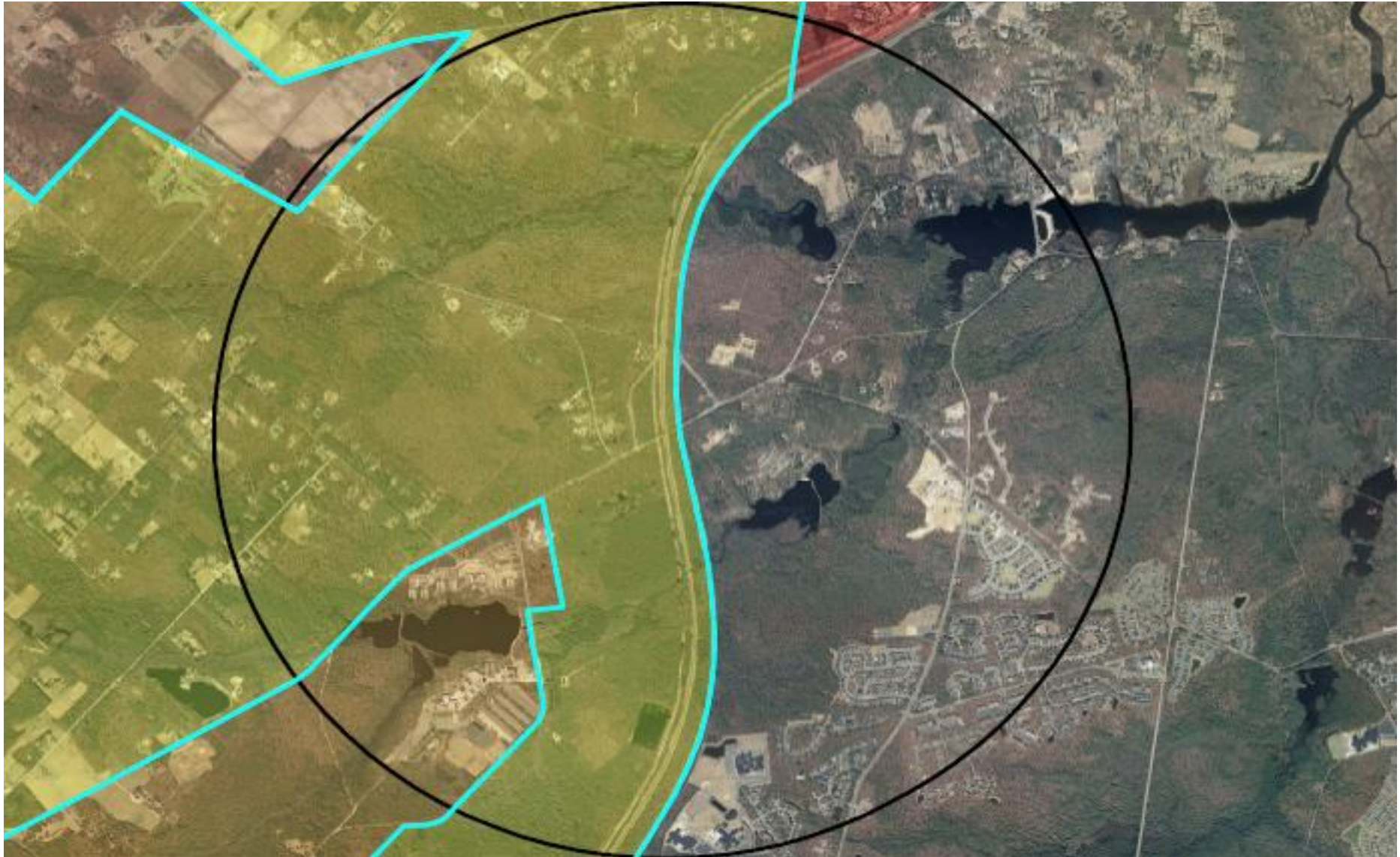


Total Acres
Preserved:
8,969

Garden State Parkway Exit 44 Secondary Impacts Agreement

- Atlantic County agreed to protect 356 acres within 1.5 miles of Interchange 44 by December 2019
- FY19 acquisition: 129 acres
- Total acquired to date: 326 acres

1.5 Miles from Interchange 44





Protected Lands as of August 2019

- GSP Exit 44
- Stockton Master Plan
- Other



Green Acres Program

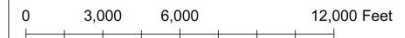
FY19 Pinelands Area Acquisition

Municipality	Management Area	Acres Acquired
Bass River Township	PAD	120
Berkeley Township	FA	35
Buena Vista Township	FA	78
Galloway Township	PAD	123
Hamilton Township	APA and FA	35
Washington Township	PAD	64
Waterford Township	RDA	2.5
Total		460

FY19 County Open Space Acquisition



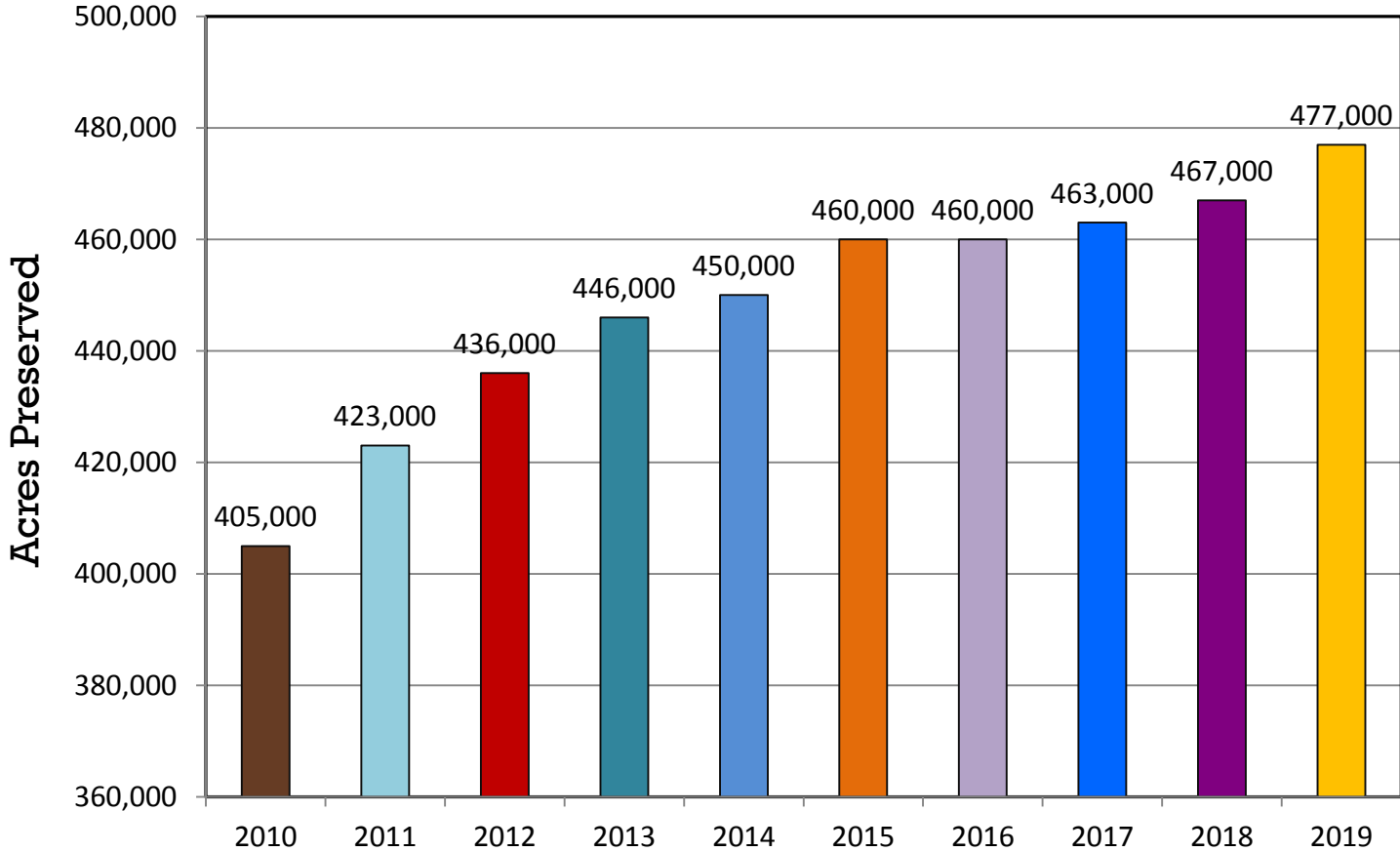
FORKED RIVER MOUNTAINS - TNC EXTENSION LACEY TOWNSHIP



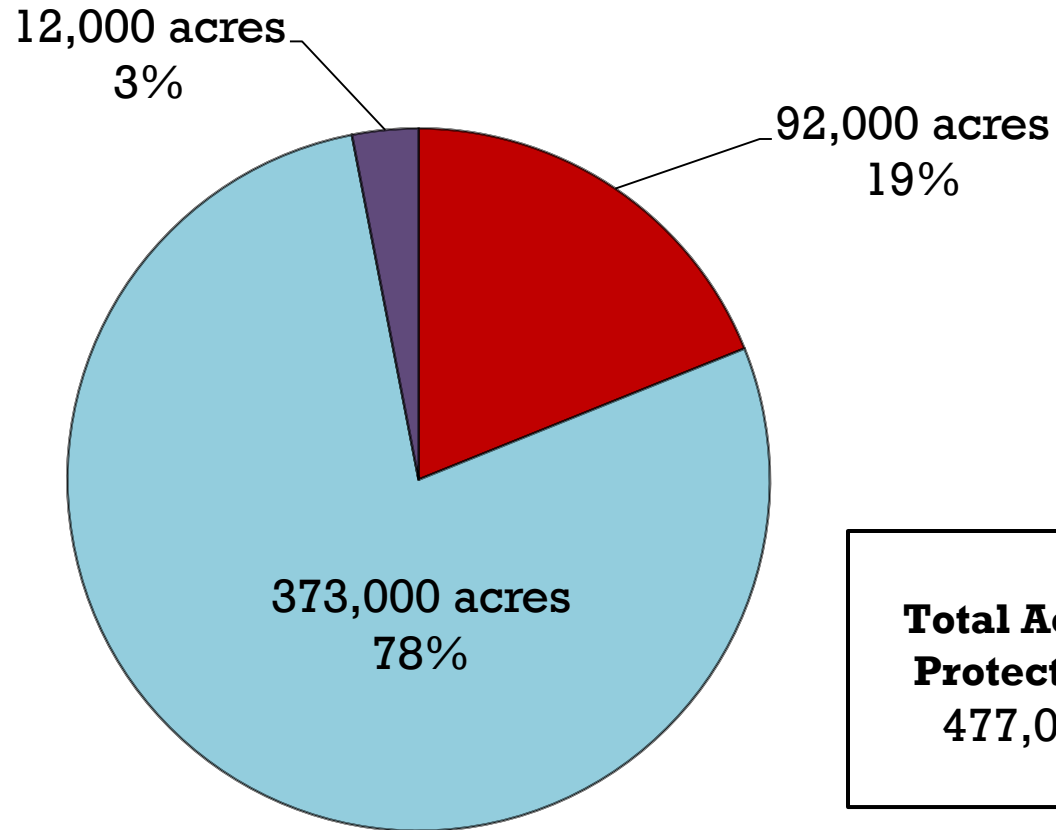
Creator: Ocean County Department of Planning
Date: 08/06/19
Contact: (732) 929-2054



Permanent Land Protection in the Pinelands Area through June 2019



Permanent Land Protection Programs in the Pinelands Area through June 2019



■ Pinelands Programs

■ Other Government Programs

■ NGO Programs

Protected Lands by Management Area

June 2019

Management Area	Total Acres	% Protected
PAD	295,000	82.5%
SAPA	37,500	60%
FA	257,000	58%
APA	68,500	41%
RDA	109,500	20.5%
RGA	76,500	8%
Village	26,000	4%
Town	21,500	6%
Military/Federal	47,000	1%
Pinelands Area Total	938,000	51%

Permanent Land Protection in the Pinelands Area

June 2019

- 477,000 acres protected
- 51% of the Pinelands Area
- 94% of the protected land is located in the conservation-oriented management areas (PAD, SAPA, FA, APA)



The 200-acre Katz property in Pemberton Township, protected through PDC severance in 2006 and the PCF acquisition program in 2019

Photo by NJPC